



DEE CEE  
The Fashion Designer  
SHIRIN

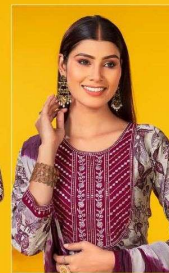


WE'RE UNIQUE NO MATTER  
HOW YOU PUT IT.





DEE CEE  
The Fashion Designer  
SHIRIN



CLOTHES ARE THE  
SPIRIT OF FASHION.



DEE CEE  
The Fashion Designer  
SHIRIN



DEE CEE  
The Fashion Designer  
SHIRIN



WE'RE UNIQUE NO MATTER  
HOW YOU PUT IT.

DEE CEE  
The Fashion Designer  
SHIRIN



BRINGING YOU THE  
ELEMENTS OF STYLE





FAB:- HEAVY CHANDERI PRINT.  
PATTERN:- FLARED LONG KURTI WITH COMPUTER EMBROIDERY  
YOCK WITH MATCHING FABRIC. COMPUTER EMBROIDERY BORDER ON 3/4 SLEEVE.  
LENTH:- 46"  
GHERA :- 40"  
PANT :- PRINTED CHANDERI FABRIC WITH ONE SIDE POCKET. WITH 38" LENGTH.  
DUPATTA :- HEAVY NAZIN BATIK DYING WITH FOUR SIDE LACE  
SIZE:- L, XL, XXL, 3XL, 4XL, 5XL.



**SHIRIN**  
THE FASHION EMPIRE

