





*Ramsha*  
VOL-12

RINAZ<sup>®</sup>  
FASHION



D.NO.18001



D.NO.18002



D.NO.18003



D.NO.18004



#### WASHING INSTRUCTIONS

DO NOT USE ANY TYPE OF BLEACH OR STAIN REMOVING CHEMICALS  
BEFORE CUTTING / STITCHING. FABRIC SHOULD BE SOAKED OR SOAKED IN WATER  
(ALL COMPONENTS SEPARATELY) FOR 15 MINUTES  
DO NOT KEEP WET FABRIC IN TWISTED FORM IN ORDER TO AVOID COPY MARKS!  
WASH COLOURED AND WHITE FABRICS SEPARATELY  
IRON CLOTHES AT MODERATE TEMPERATURE! DO NOT DRY FABRIC IN DIRECT SUNLIGHT  
(EXTRA LACER, HANGINGS AND ACCESSORIES ARE NOT INCLUDED)

TOP - FOX GEORGETTE WITH HEAVY  
EMBROIDERY & DIAMOND WORK  
BOTTOM - HEAVY SHANTUN WITH  
EMBROIDERY  
DUPATTA - NAYAN WITH HEAVY  
EMBROIDERY

**Ramsha**  
VOL-12  
D.NO.18002



#### WASHING INSTRUCTIONS

DO NOT USE ANY TYPE OF BLEACH OR STAIN REMOVING CHEMICALS  
BEFORE CUTTING / STITCHING, FABRIC SHOULD BE SOAKED IN WATER  
(ALL COMPONENTS SEPARATELY) FOR 15 MINUTES  
DO NOT KNEAD FABRIC IN TWISTED FORM IN ORDER TO AVOID COPY MARKS!  
WASH COLOURED AND WHITE FABRICS SEPARATELY  
IRON CLOTHES AT MODERATE TEMPERATURE! DO NOT DRY FABRIC IN DIRECT SUNLIGHT  
(EXTRA LACER, HANGINGS AND ACCESSORIES ARE NOT INCLUDED)

TOP - FOX GEORGETTE WITH HEAVY  
EMBROIDERY & DIAMOND WORK  
BOTTOM - HEAVY SHANTUN WITH  
EMBROIDERY  
DUPATTA - NET WITH HEAVY  
EMBROIDERY

**Ramsha**  
VOL-12  
D.NO.18001





**RINAZ**<sup>®</sup>  
FASHION

**WASHING INSTRUCTIONS**

DO NOT USE ANY TYPE OF BLEACH OR STAIN REMOVING CHEMICALS  
BEFORE CUTTING / STITCHING, FABRIC SHOULD BE SOAKED IN WATER  
(ALL COMPONENTS SEPARATELY) FOR 15 MINUTES  
DO NOT KEEP WET FABRIC IN TWISTED FORM IN ORDER TO AVOID COPY MARKS!  
WASH COLOURED AND WHITE FABRICS SEPARATELY  
IRON CLOTHES AT MODERATE TEMPERATURE! DO NOT DRY FABRIC IN DIRECT SUNLIGHT  
(EXTRA LACES, HANGINGS AND ACCESSORIES ARE NOT INCLUDED)

TOP - FOX GEORGETTE WITH HEAVY  
EMBROIDERY & DIAMOND WORK  
BOTTOM - HEAVY SHANTUN WITH  
EMBROIDERY  
DUPATTA - NAYAN WITH HEAVY  
EMBROIDERY

**Ramsha**  
VOL-12  
D.NO.18004

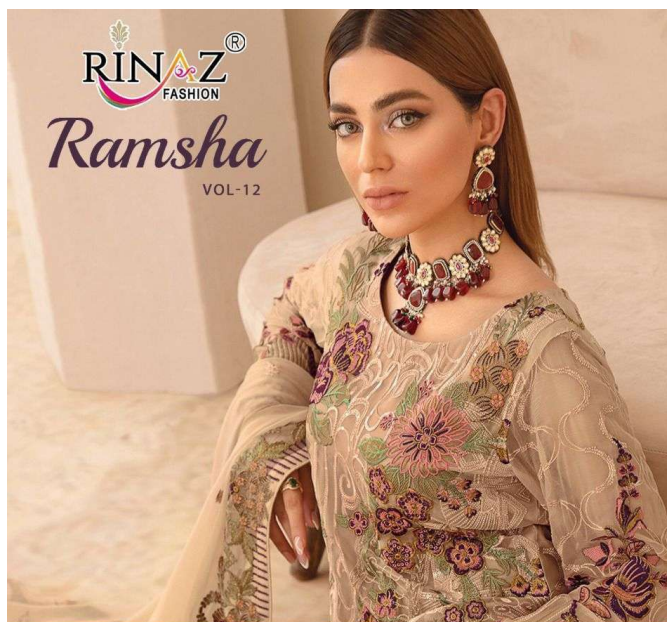


#### WASHING INSTRUCTIONS

DO NOT USE ANY TYPE OF BLEACH OR STAIN REMOVING CHEMICALS  
BEFORE CUTTING / STITCHING. FABRIC SHOULD BE SOAKED OR SOAKED IN WATER  
(ALL COMPONENTS SEPARATELY) FOR 15 MINUTES  
DO NOT KEEP WET FABRIC IN TWISTED FORM IN ORDER TO AVOID COPY MARKS!  
WASH COLOURED AND WHITE FABRICS SEPARATELY  
IRON CLOTHES AT MODERATE TEMPERATURE! DO NOT DRY FABRIC IN DIRECT SUNLIGHT  
(EXTRA LACES, HANGINGS AND ACCESSORIES ARE NOT INCLUDED)

TOP - FOX GEORGETTE WITH HEAVY  
EMBROIDERY & DIAMOND WORK  
BOTTOM - HEAVY SHANTUN WITH  
EMBROIDERY  
DUPATTA - NET WITH HEAVY  
EMBROIDERY

**Ramsha**  
VOL-12  
D.NO.18003



D.No.	TOP	BOTTOM	DUPATTA
14001	FOX GEORGETTE WITH HEAVY EMBROIDERY & DIAMOND WORK	HEAVY SHANTUN WITH EMBROIDERY	NET WITH HEAVY EMBROIDERY
14002	FOX GEORGETTE WITH HEAVY EMBROIDERY & DIAMOND WORK	HEAVY SHANTUN WITH EMBROIDERY	NAZNIN WITH HEAVY EMBROIDERY
14003	FOX GEORGETTE WITH HEAVY EMBROIDERY & DIAMOND WORK	HEAVY SHANTUN WITH EMBROIDERY	NET WITH HEAVY EMBROIDERY
14004	FOX GEORGETTE WITH HEAVY EMBROIDERY & DIAMOND WORK	HEAVY SHANTUN WITH EMBROIDERY	NAZNIN WITH HEAVY EMBROIDERY

\*NOTE : Rate 1375 + GST Extra.