









21401



21402



21403



21404

LILY & LALI
a brand by NUSRAJ



21405



21406



LILY&LALI
a brand by PINKI



LILY & LALI
a brand of Firdos







LILY & LALI
A BRAND BY KIRAN JOSHI







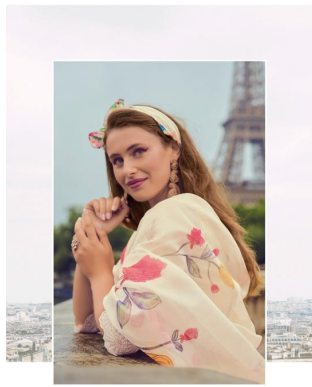
LILY & LALI

A PRODUCT OF KAYE GROUP

BEAUTIFUL FASHION





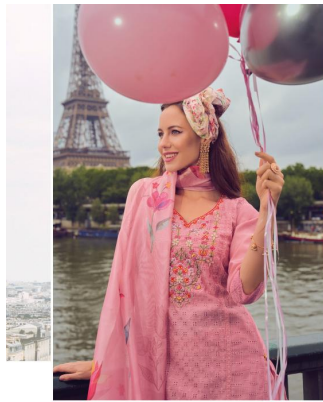


LILY & LALI
DESIGNER
A MEMBER OF THE LALU GROUP





LILY&LALI
a brand of **WOLF**



LILY & LALI
a brand by PINKI





LILY & LALI
a brand of **First** brand

LILY&LALI

DESIGNER

A PART OF THE

LOVE MY COUNTRY AND PRIDE TO SHOW THE COUNTRY AS THEIR OWN. THEY'VE COME WITH A MESSAGE OF LOVE AND PRIDE FOR THEIR COUNTRY. THEY'VE COME WITH A MESSAGE OF LOVE AND PRIDE FOR THEIR COUNTRY. THEY'VE COME WITH A MESSAGE OF LOVE AND PRIDE FOR THEIR COUNTRY.



The advertisement is split into two vertical panels. The left panel is dark grey with white text and logos. The right panel is a photograph of two women in traditional Pakistani attire standing on a bridge with the Eiffel Tower in the background.

Top Left Panel:

- Logos for "Lily & Lali" and "A member of B&B" are at the top.
- The word "NUSRAT" is centered in a large, white, serif font.
- Below "NUSRAT" is the "LILY & LALI" logo and "A member of B&B".
- At the bottom, it lists "Corporate office" and "A TRADING GROUP INC. IN PAKISTAN" with contact details for Lahore, Karachi, and Islamabad.
- It includes a QR code and social media icons for Facebook, Instagram, and Twitter.
- A small note at the bottom says "Complimentary Events Not For Sale".

Right Panel:

- A red circular seal at the top left says "NEW ARRIVAL".
- The "LILY & LALI" logo and "A member of B&B" are at the top center.
- The word "NUSRAT" is written in a large, red, serif font below the logo.
- The photograph shows two women standing on a bridge. One is wearing a pink shawl and the other a white shawl with a floral pattern. The Eiffel Tower is visible in the background.