



25209 B

SAREE STYLE: *Ready to wear*

FABRIC: *Banarasi Crush Silk*

ACCESSORIES WITH: *A Designer Belt*

DESIGN NO	SARLÉ FABRIC	BLOUSE FABRIC	NECK	JACKET	SARLÉ TYPE	CURTZ (SEAMS)STITCH/JUN-STITCH	BLOUSE SIZE
25201	Ondra Effect Satin 584	Ondra Effect Satin 584	Fine Beads Handwork	Available	READY TO WEAR	initialMessage	up to 20 inch with margin of 42 inch
25202	Ondra Effect Satin 584	Ondra Effect Satin 584	Fine Beads Handwork	Available	READY TO WEAR	initialMessage	up to 20 inch with margin of 42 inch
25203	Ondra Effect Satin 584	Ondra Effect Satin 584	Fine Beads Handwork	Available	READY TO WEAR	initialMessage	up to 20 inch with margin of 42 inch
25204	Ondra Effect Satin 584	Ondra Effect Satin 584	Fine Beads Handwork	Available	READY TO WEAR	initialMessage	up to 20 inch with margin of 42 inch
25206	Ondra Effect Satin 584	Ondra Effect Satin 584	Fine Beads Handwork	Available	READY TO WEAR	initialMessage	up to 20 inch with margin of 42 inch
25207	Crope Satin 584	Georgette	Thread, Sequence, Applique, Most work	Not Available	READY TO WEAR	initialMessage	up to 20 inch with margin of 42 inch
25207-B	Crope Satin 584	Georgette	Thread, Sequence, Applique, Most work	Not Available	READY TO WEAR	initialMessage	up to 20 inch with margin of 42 inch
25208	Crope Satin 584	Satin 584	Thread, Sequence, Applique, Most work	Not Available	READY TO WEAR	initialMessage	up to 20 inch with margin of 42 inch
25208-B	Crope Satin 584	Satin 584	Thread, Sequence, Applique, Most work	Not Available	READY TO WEAR	initialMessage	up to 20 inch with margin of 42 inch
25209	Crope Satin 584	Georgette	Thread, Sequence, Applique, Most work	Not Available	READY TO WEAR	initialMessage	up to 20 inch with margin of 42 inch
25209-B	Crope Satin 584	Georgette	Thread, Sequence, Applique, Most work	Not Available	READY TO WEAR	initialMessage	up to 20 inch with margin of 42 inch



25209 B

SAREE STYLE: *Ready to wear*

FABRIC: *Banarasi Crush Silk*

ACCESSORIES WITH: *A Designer Belt*



25209 A

SAREE STYLE: *Ready to wear*
FABRIC: *Banarasi Crush Silk*
ACCESSORIES WITH: *A Designer Belt*



25208 B

SAREE STYLE: *Ready to wear*

FABRIC: *Banarasi Crush Silk*

ACCESSORIES WITH: *A Designer Belt*



25208 A

SAREE STYLE: *Ready to wear*

FABRIC: *Banarasi Crush Silk*

ACCESSORIES WITH: *A Designer Belt*



25207 B

SAREE STYLE: *Ready to wear*

FABRIC: *Banarasi Crush Silk*

ACCESSORIES WITH: *A Designer Belt*



25207 A
SAREE STYLE: *Ready to wear*
FABRIC: *Banarasi Crush Silk*
ACCESSORIES WITH: *A Designer Belt*



25205
SAREE STYLE: Ready to wear
WORK: Pure Beads Handwork
FABRIC: Under Effect Satin Silk
ACCESSORIES: Blouse, Jacket With Belt







25204
SAREE STYLE: Ready to wear
WORK: Pure Beads Handwork
FABRIC: Centre Effect Saree Silk
ACCESSORIES: Blouse, Jacket



25203
SAREE STYLE: Ready to wear
WORK: Pure Bead Handwork
FABRIC: Ombre Effect Satin Silk
ACCESSORIES: Blossom Jacket

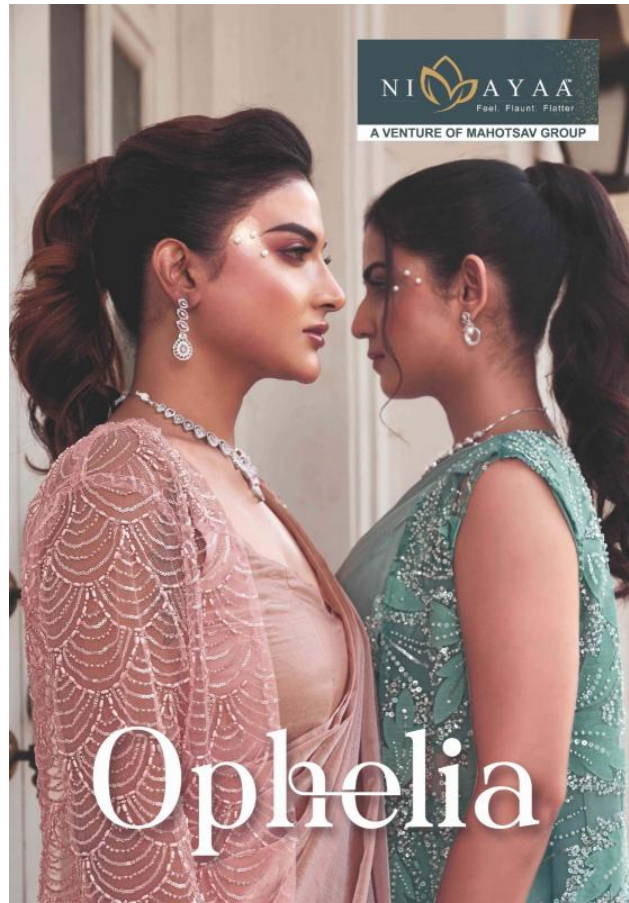




25202
SAREE STYLE: Ready to wear
WORK: Pure Bead's Handwork
FABRIC: Ombre Effect Satin Silk
ACCESSORIES: Blouse, Jacket







NI AYAA
Feel. Flaunt. Flatter
A VENTURE OF MAHOTSAV GROUP

Ophelia