





# SAJDA

(EXCLUSIVE COLLECTION)

## FABRICS DETAILS

### TOP

EMBROIDERY & HANDWORK ON PURE VISCOSE VATICAN FABRIC WITH DAMAN & SLEEVE WORK & PURE COTTON INNER.

### BOTTOM

PURE VISCOSE VATICAN FABRIC PANT WITH BOTTOM WORK.

### DUPATTA

ORGANZA DIGITAL PRINT DUPATTA (36" INCHES).

### SIZES

M, L, XL, XXL, 3XL

NOTE: PURE COTTON INNER INSIDE EVERY TOP  
STICKER PHOTO INSIDE EVERY CATALOGUE













ELEVATE YOUR STYLE  
ELEVATE YOUR LIFE

LADY  
LEELA

SAJDA  
(EXCLUSIVE COLLECTION)



1001



1002



1003



1004



1005



1006







REFLECTIVE MATERIALS



ELEVATE YOUR STYLE  
ELEVATE YOUR LIFE

LADY  
LEELA





◆◆◆

PUTTING BEAUTY STYLE

"Beauty is part of the daily life and it comes of the way of life with the growth, but it is not the appearance of it."  
- Aristotle

1004 //



ELEVATE YOUR STYLE  
ELEVATE YOUR LIFE

LADY  
LEELA



1003 //

"Fashion is part of the daily air and it changes all the time, with all the events. We can even see the approaching of a revolution in clothes. You can see and feel everything in clothes."



ELLEVATE YOUR STYLE  
ELLEVATE YOUR LIFE



# SAJDA

(EXCLUSIVE COLLECTION)









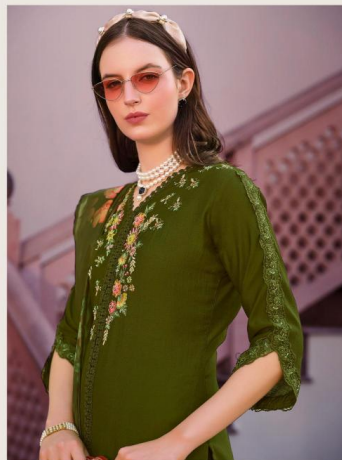






ELEVATE YOUR STYLE  
ELEVATE YOUR LIFE

LADY  
LEELA



"Fashion is part of the daily air and it changes all the time, with all the  
evolve. You can even see the signposting of a revolution in clothes. You  
can see and feel everything in clothes."

1006 //

BEAUTY IS AN EXPRESSION ◆◆◆



M O O D

"I think there is beauty in everything. What 'normal' people perceive as ugly,  
I can usually see something of beauty in it."