

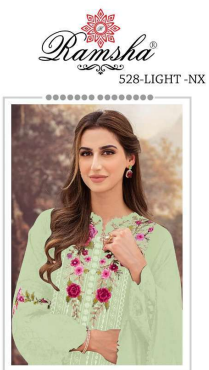


#R-528 - P



TOP- GEORGET WITH HEAVY EMBROIDERY
BOTTOM- DULL SANTOON
DUPATTA - NAZMEEN EMBROIDERY WORK

☉ DRY CLEAN ONLY.
✘ DO NOT USE ANY BLEACH OR STAIN REMOVING CHEMICAL.
☉ IRON THE FABRIC AT MODERATE TEMPERATURE.



#R-528-M



#R-528-N



#R-528-O



#R-528-P

Ramsha
528-LIGHT-NX

Ramsha®

#R-528 - M



TOP- GEORGET WITH HEAVY EMBROIDERY
BOTTOM- DULL SANTOON
DUPATTA - NAZMEEN EMBROIDERY WORK

☉ DRY CLEAN ONLY.
✘ DO NOT USE ANY BLEACH OR STAIN REMOVING CHEMICAL.
☎ IRON THE FABRIC AT MODERATE TEMPERATURE.

Ramsha®

#R-528 - N



TOP- GEORGET WITH HEAVY EMBROIDERY
BOTTOM- DULL SANTOON
DUPATTA - NAZMEEN EMBROIDERY WORK

☉ DRY CLEAN ONLY.
⚠ DO NOT USE ANY BLEACH OR STAIN REMOVING CHEMICAL.
☎ IRON THE FABRIC AT MODERATE TEMPERATURE.



#R-528 - P



TOP- GEORGET WITH HEAVY EMBROIDERY
BOTTOM- DULL SANTOON
DUPATTA - NAZMEEN EMBROIDERY WORK

☉ DRY CLEAN ONLY.
✘ DO NOT USE ANY BLEACH OR STAIN REMOVING CHEMICAL.
☉ IRON THE FABRIC AT MODERATE TEMPERATURE.