







22901



22902



22903



22904



22905



22906

LILY&LALI
SILK PRIDE
A MEMBER OF THE LAL Group

Miraan
VOL - 3



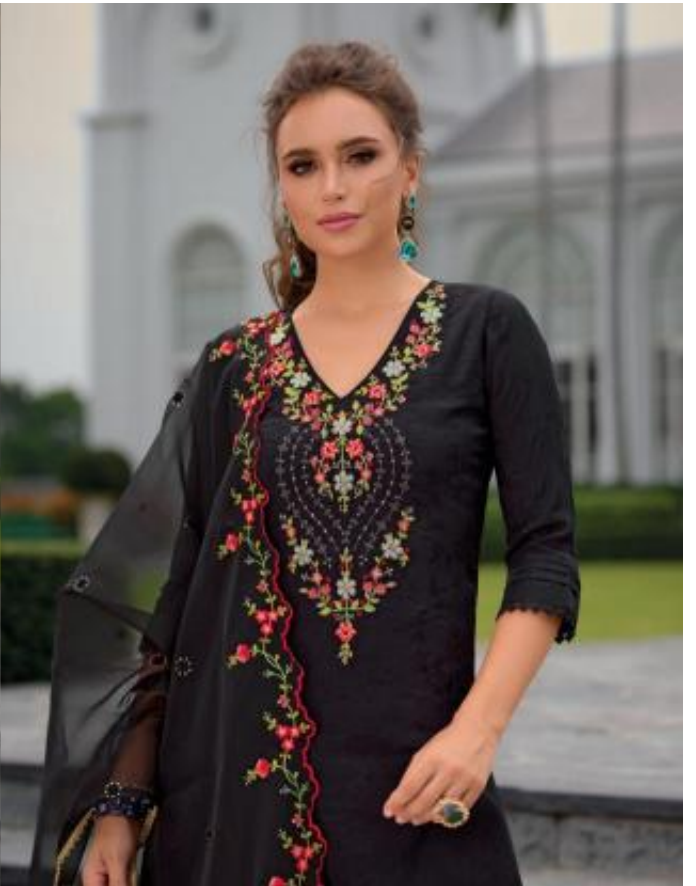
THE VIBRANT

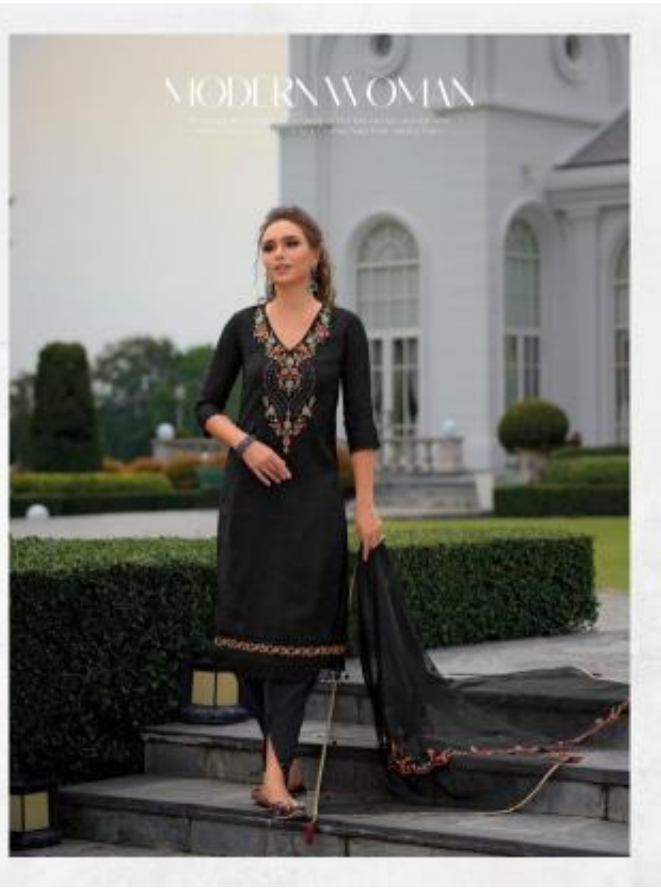
The vibrant yellow hue of the dress is a perfect match for the colorful embroidery of the shawl.

LILY & LALI
WOMEN'S WEAR
A DIVISION OF LALU GROUP



22054







LILY&LALI®
DESIGN PRIDE
A MEMBER OF KIRAN GROUP







PERFECT CHOICE

The elegant blue embroidered kurta with matching dupatta is perfect for wedding occasions and other special occasions.



LILY & LALI
A COLLECTION BY KAVI







THE VIBRANT

The vibrant yellow hue is full of energy and joy, perfect for the summer months. It's a color that radiates positivity and warmth.



EHY & LALI

