





Rasmi

READYMAD  
COLLECTION



#R-1190-A



#R-1190-B



#R-1190-C






#R-1190-D



**READYMAD**  
**#R-1190-B**



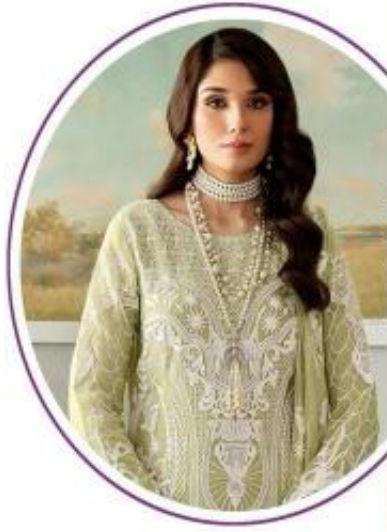
TOP - GEORGET EMBROIDERY  
BOTTOM - SILK STICH  
DUPATTA - NAZMEEN EMBROIDERY

-  DRY CLEAN ONLY.
-  DO NOT USE ANY BLEACH OR STAIN REMOVING CHEMICAL.
-  IRON THE FABRIC AT MODERATE TEMPERATURE.








**READYMAD**  
**#R-1190-A**



TOP - GEORGET EMBROIDERY  
BOTTOM - SILK STICH  
DUPATTA - NAZMEEN EMBROIDERY

-  DRY CLEAN ONLY.
-  DO NOT USE ANY BLEACH OR STAIN REMOVING CHEMICAL.
-  IRON THE FABRIC AT MODERATE TEMPERATURE.








**READYMAD**  
**#R-1190-D**



TOP - GEORGET EMBROIDERY  
BOTTOM - SILK STICH  
DUPATTA - NAZMEEN EMBROIDERY

-  DRY CLEAN ONLY.
-  DO NOT USE ANY BLEACH OR STAIN REMOVING CHEMICAL.
-  IRON THE FABRIC AT MODERATE TEMPERATURE.



*Ramsha*

READYMAD  
#R-1190-C



TOP - GEORGET EMBROIDERY  
BOTTOM - SILK STICH  
DUPATTA - NAZMEEN EMBROIDERY

☐ DRY CLEAN ONLY.  
✘ DO NOT USE ANY BLEACH OR STAIN REMOVING CHEMICAL.  
☐ IRON THE FABRIC AT MODERATE TEMPERATURE.

